



Easy Clean PE Calf Shed Components For Calf Island Protect Feed From Rain

Our Product Introduction

more products please visit us on mobilemilkingmachine.com

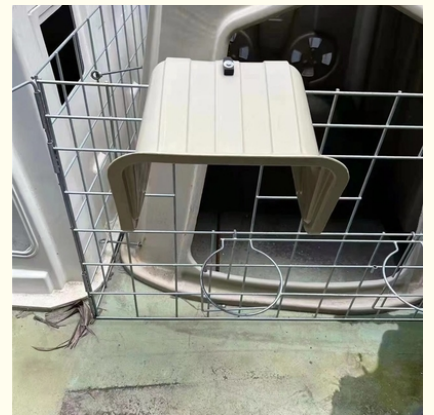
Basic Information

- Place of Origin: China
- Brand Name: Chuangpu
- Model Number: HL-MP10D-6-1
- Minimum Order Quantity: 1 PCS
- Price: Negotiable
- Packaging Details: Carton
- Delivery Time: 3-5 working days
- Payment Terms: T/T
- Supply Ability: 50000PCS /Month



Product Specification

- Easy To Clean: Yes
- Function: Shield The Feed Bucket From Rain, Ensuring That The Dry Roughage Remains Clean And Hygienic.
- Manufacturer: Chuangpu
- Durable: Yes
- Weight: 0.93KG
- Material: PE
- Usage: Place It On The Calf Island
- Length: 425mm
- Highlight: **Easy Clean Calf Shed Components, PE Calf Shed Components, Rain Calf Shed Components**



More Images



Product Description

Corporate HQ: [CHUANGPU ANIMAL HUSBANDRY TECHNOLOGY\(SUZHOU\) CO.,LTD](#)

Export Dept: [ZHANGJIAGANG FANRS MACHINERY CO.,LTD.](#)

Branch: [Sichuan Gene Haven Animal Husbandry Technology Co.Ltd](#)

EMAIL: nancyzd68@gmail.com
sales2@dairymachinery.cc

MOBILE: +86 133 0156 9240(Wechat/WhatsApp)
 OFFICE: +86 512 5890 5953

Product Description:

One of the key functions of these calf hutch parts is to shield the feed bucket from rain, ensuring that the dry roughage remains clean and hygienic. This is particularly important for young calves, who are more susceptible to illness and disease. By protecting their food from the elements, you can help to keep your calves healthy and happy.

Another great feature of these calf hutch parts is their height and width, which measures 330mm. This makes them the perfect size for most calf pens, providing ample coverage and protection. And because they are made from high-quality materials, you can be sure that they will last for many years to come.

In addition to their durability, these calf hutch parts are also incredibly easy to clean. This is important for maintaining a healthy environment for your calves, as it helps to keep bacteria and other harmful substances at bay. With just a quick rinse or wipe-down, these parts will be as good as new.

In summary, the Calf Hutch Parts are an essential component of any calf management system. These cowshed parts provide the perfect solution for shielding the feed bucket from rain, ensuring that the dry roughage remains clean and hygienic. With their lightweight design, durable materials, and easy-to-clean surfaces, these young cattle hutch pieces are a must-have for any farmer looking to improve the health and welfare of their calves.

Features:

Product Name: Calf Hutch Parts

Weather Resistant: Yes

Durable: Yes

Weight: 0.93KG

Height and Width: 330mm

Compatible With: Calf Hutch

Calf Hutch Parts is an essential component for any calf house. These livestock enclosure elements are designed to be durable and weather-resistant, ensuring that your calf pen units remain in top condition. With a height and width of 330mm, these parts are compatible with the Calf Hutch, making them a must-have for any cattle farmer.

Technical Parameters:

Length	425mm
Height and Width	330mm
Weight	0.93KG
Volume	8L
Material	PE
Function	Shield The Feed Bucket From Rain, Ensuring That The Dry Roughage Remains Clean And Hygienic.
Manufacturer	Chuangpu
Durable	Yes
Compatible With	Calf Hutch
Usage	Place It On The Calf Island

These technical parameters apply to the Calf Hutch Parts product, which is a type of Heifer Barn Segments, Junior Cattle Hovel Elements, and Calf Pen Units.

Applications:

These Calf Hutch Parts are weather-resistant, which makes them suitable for all kinds of weather conditions. They can be used to shield the feed bucket from rain, ensuring that the dry roughage remains clean and hygienic. The HL-MP10D-6-1 model can be used in various scenarios that involve taking care of calves.

One of the most common uses of these Calf Hutch Parts is to place them in a Calf Shed. This will help keep the calves dry and sheltered from the weather, especially during rainy or snowy seasons. The HL-MP10D-6-1 model can be used as Junior Cattle Hovel Elements in a calf shed, providing a safe and secure environment for the young calves.

Another scenario where these Calf Hutch Parts can be used is when raising calves in a pasture. The HL-MP10D-6-1 model can be placed on the calf island to shield the feed bucket from the rain, ensuring that the dry roughage remains clean and hygienic. This will help keep the young calves healthy and strong, which is essential for their growth and development.

Overall, the HL-MP10D-6-1 model of Calf Hutch Parts from Chuangpu is a versatile product that can be used in various scenarios involving the care of young calves. Whether used as Junior Cattle Hovel Elements in a calf shed or placed on the calf island in a pasture, these Calf Shed Components will help keep the young calves healthy and comfortable.

重量: 0.93KG





Hailian Packaging Equipment Co.,Ltd

☎ 0086 13301569240

✉ sales2@dairymachinery.cc

🌐 mobilemilkingmachine.com

Nanzhuang Village, Economic Development Zone, Yangshe Twon, Zhangjiagang City, China